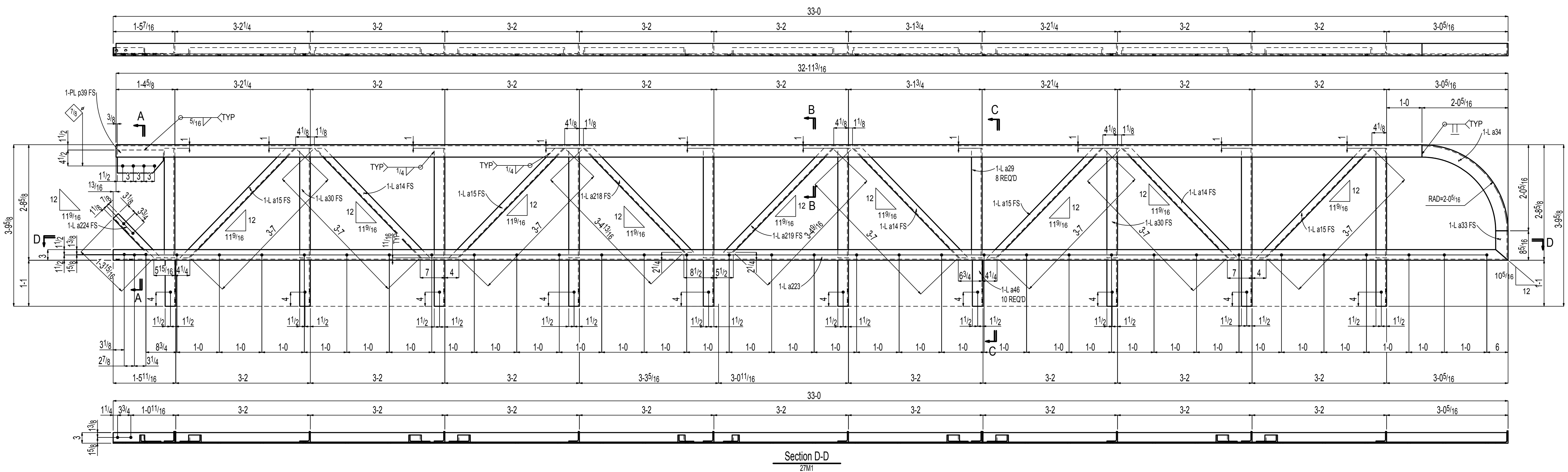




### BILL OF MATERIAL

| SHIP MARK | PIECEMARK | QTY | DESCRIPTION           | LENGTH    | GRADE | WEIGHT | REMARKS        |
|-----------|-----------|-----|-----------------------|-----------|-------|--------|----------------|
|           |           | ONE | MISC                  |           |       | 795    |                |
| 27M1      |           | 1   | L3 1/2 x 3 1/2 x 5/16 | 30 10 7/8 | A36   | 223    | Galv           |
|           | a34       | 1   | L3 1/2 x 3 1/2 x 5/16 | 3 2 3/8   | A36   | 23     |                |
|           | a33       | 1   | L3 1/2 x 3 1/2 x 5/16 | 0 8 3/8   | A36   | 5      |                |
|           | a223      | 1   | L3 x 3 x 5/16         | 33 0      | A36   | 201    |                |
|           | a29       | 8   | L3 x 3 x 5/16         | 2 6 15/8  | A36   | 16     |                |
|           | a30       | 2   | L3 x 3 x 5/16         | 2 6 15/8  | A36   | 16     |                |
|           | a46       | 10  | L3 x 3 x 5/16         | 1 1       | A36   | 7      |                |
|           | a14       | 3   | L2 x 2 x 1/4          | 3 8 15/8  | A36   | 12     |                |
|           | a15       | 4   | L2 x 2 x 1/4          | 3 8 15/8  | A36   | 12     |                |
|           | a219      | 1   | L2 x 2 x 1/4          | 3 6 3/4   | A36   | 11     |                |
|           | a218      | 1   | L2 x 2 x 1/4          | 3 6 3/4   | A36   | 11     |                |
|           | a224      | 1   | L2 x 2 x 1/4          | 1 5 3/8   | A36   | 5      |                |
|           | p39       | 1   | PL 3/8 x 6 1/2        | 1 1       | A36   | 9      |                |
|           |           |     | FIELD BOLTS           |           |       |        |                |
|           |           | 1   | 3/4 Dia A325          | 0 1 3/4   |       |        | +1HD WASH GALV |

Total weight: 795



Section D-D  
27M1  
ONE MISC 27M1

