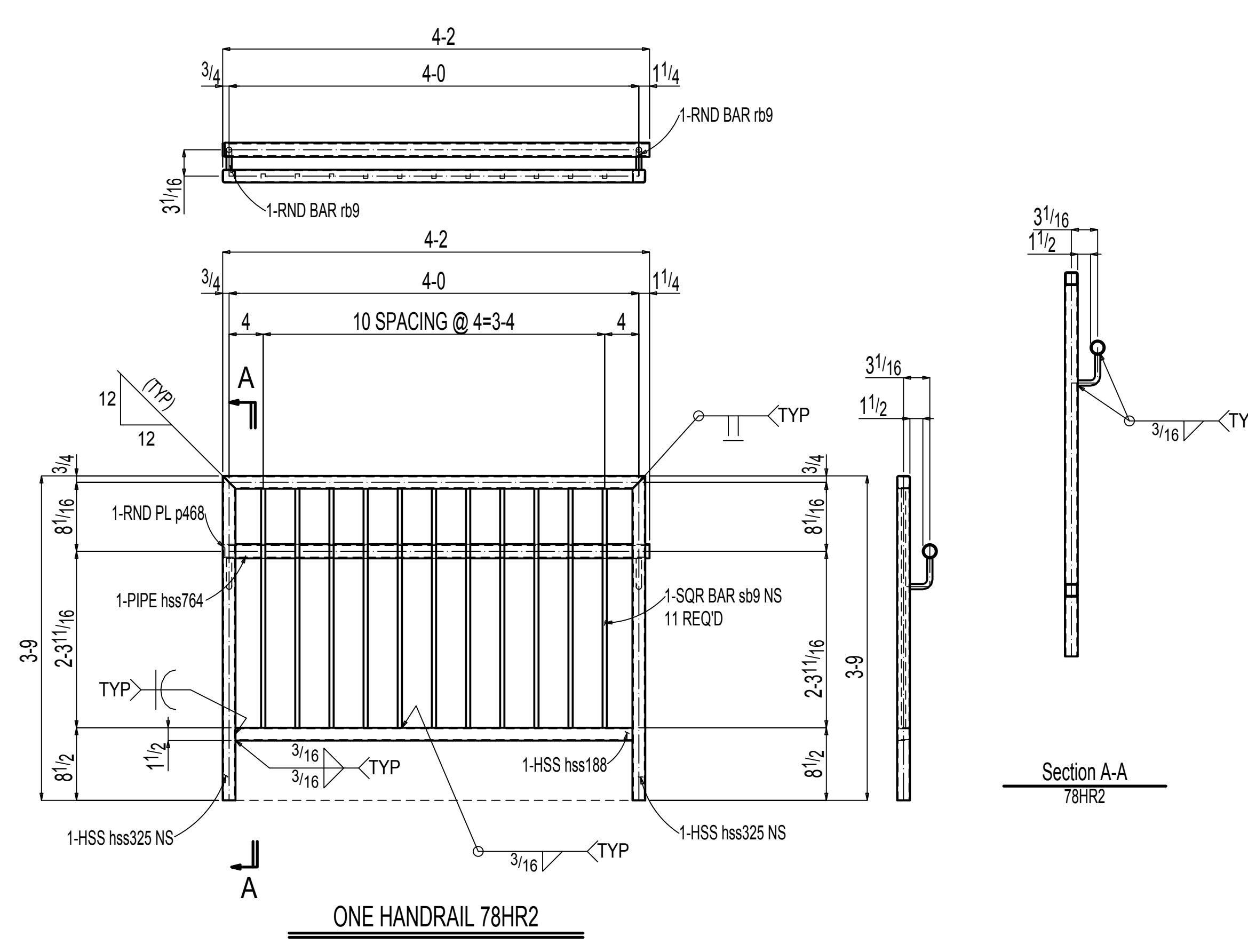
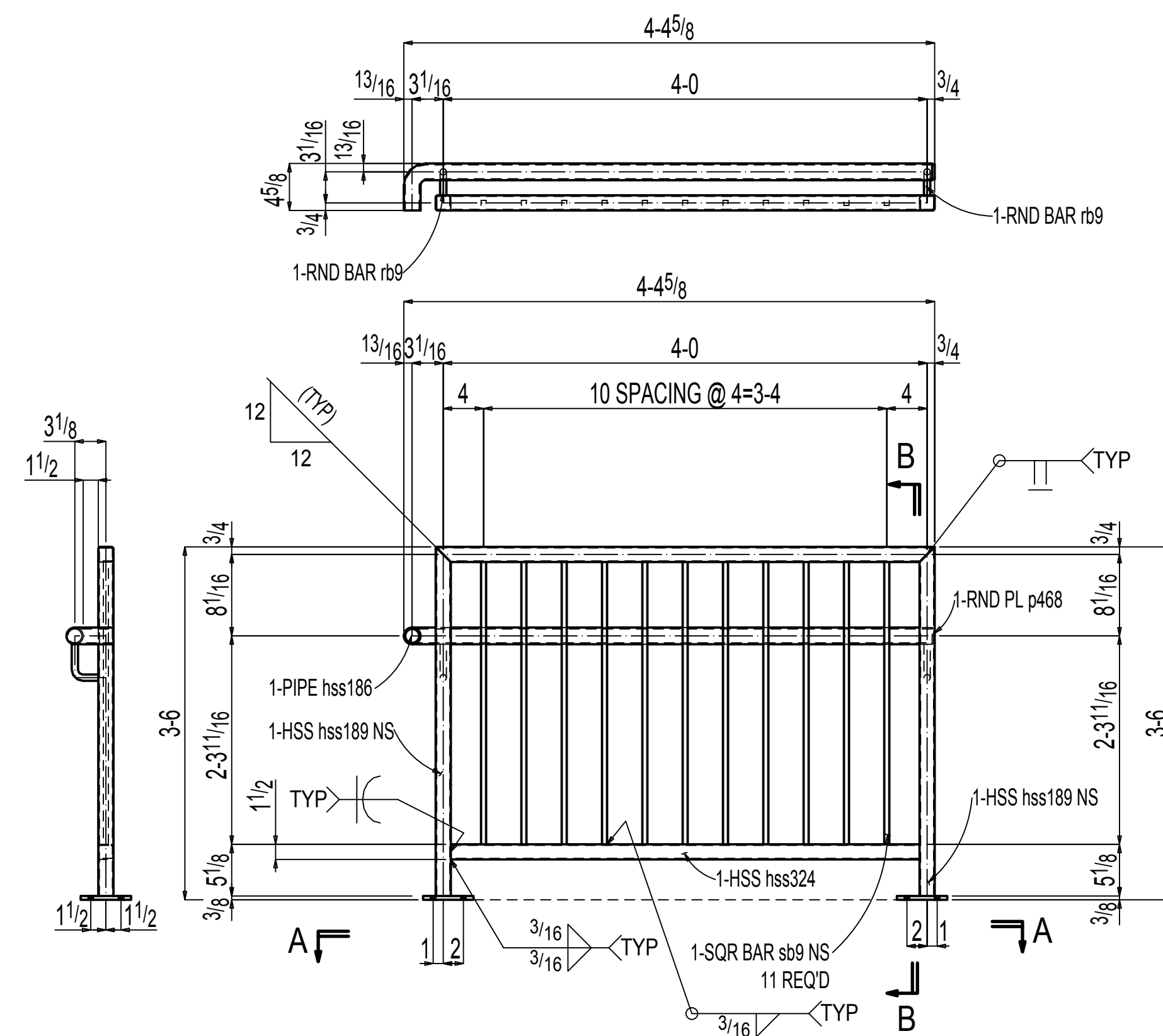


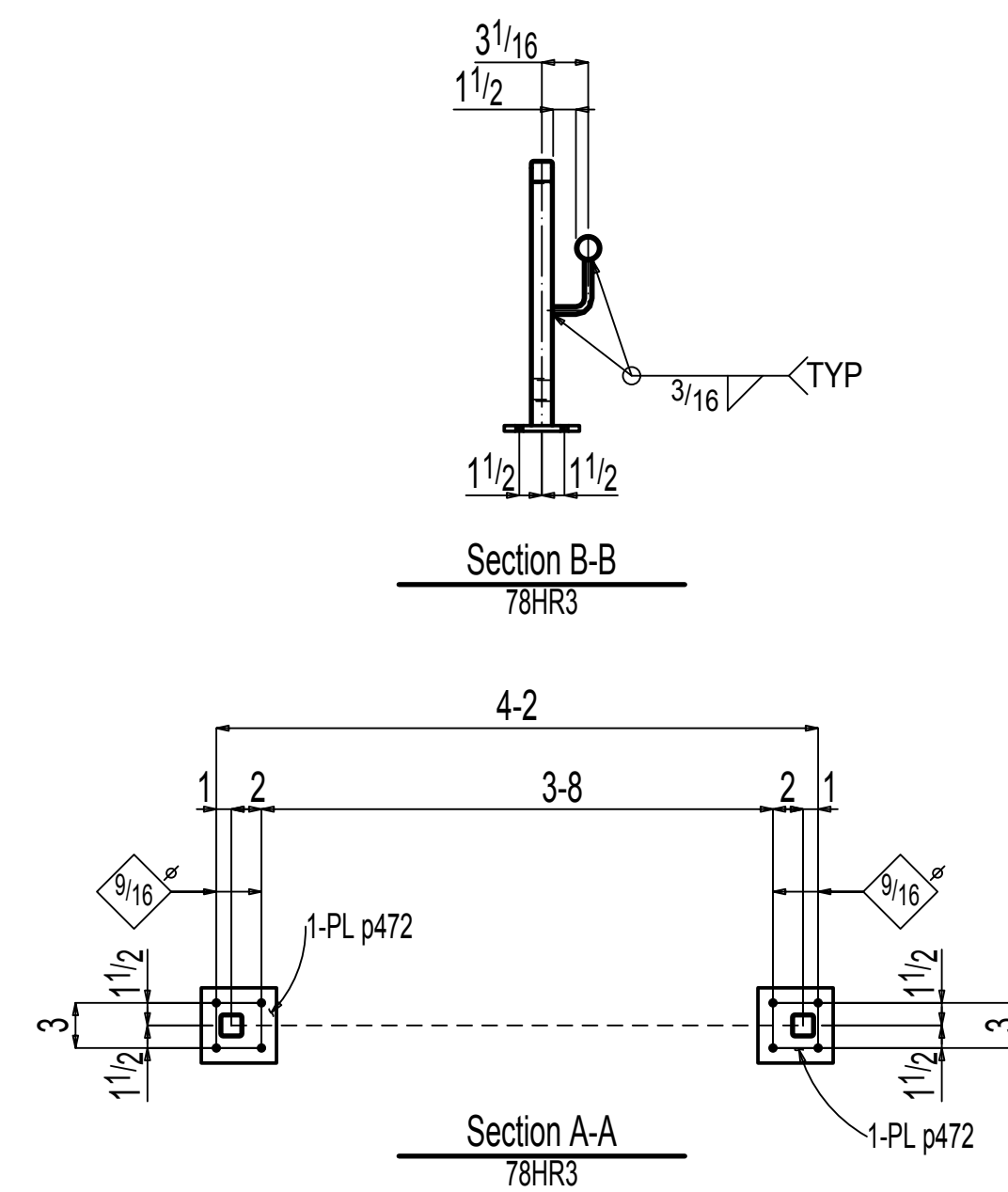
ONE HANDRAIL 78HR1



ONE HANDRAIL 78HR2



ONE HANDRAIL 78HR3



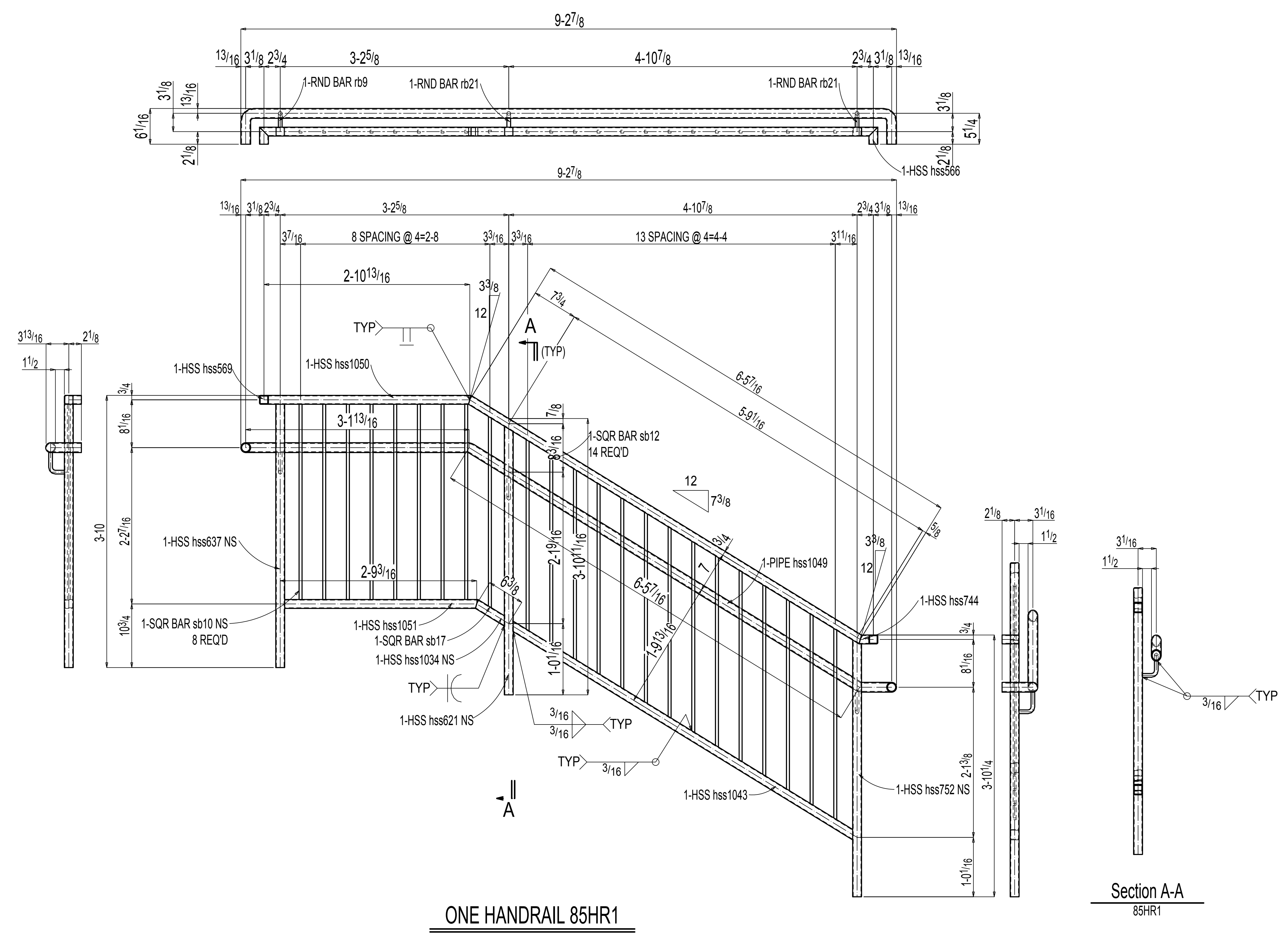
BILL OF MATERIAL

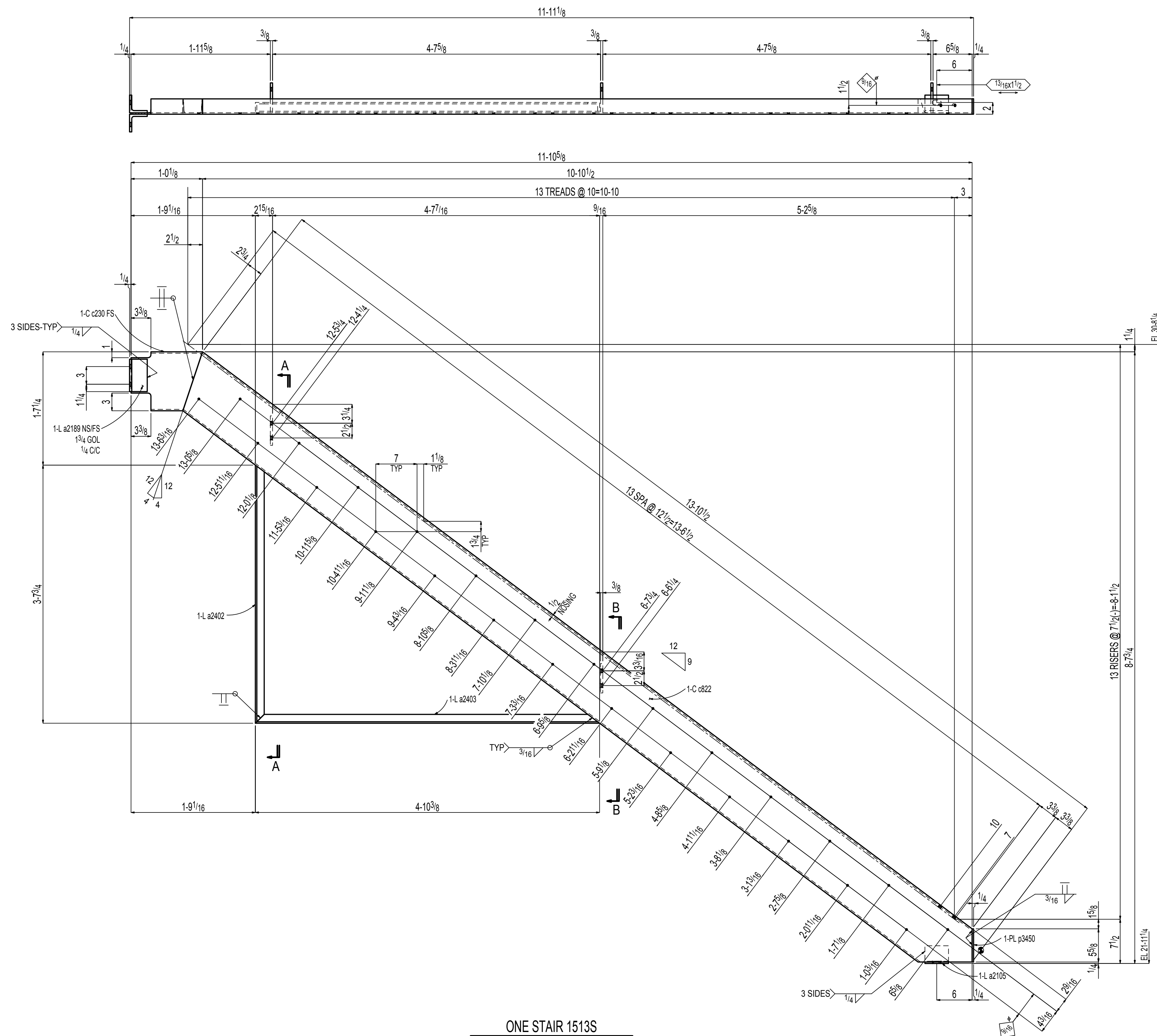
LINE #	QTY	PIECEMARK	DESCRIPTION	LENGTH	REMARKS	WEIGHT TOTAL	ADVANCE MILL #
ONE			HANDRAIL				71
1	78HR1	HSS1 1/2x1 1/2x1/8		4 1 1/2	A500C	9	
1	hss324	HSS1 1/2x1 1/2x1/8		3 10 1/2	A500C	9	
2	hss325	HSS1 1/2x1 1/2x1/8		3 9	A500C	17	
1	hss764	PIPE 1 1/4 STD		4 1 3/4	A53	9	
2	rb9	RB#9		0 4 13/16	A36	0	
1	p468	PL 1/4x1 1/2			A36	0	
11	sb9	SB1/2		2 11	A36	27	
ONE			HANDRAIL				76
1	78HR2	HSS1 1/2x1 1/2x1/8		4 1 1/2	A500C	9	
1	hss324	HSS1 1/2x1 1/2x1/8		3 10 1/2	A500C	9	
2	hss325	HSS1 1/2x1 1/2x1/8		3 5 5/8	A500C	15	
1	hss186	PIPE 1 1/4 STD		4 6 13/16	A53	10	
2	rb9	RB#9		0 4 13/16	A36	0	
2	p472	PL 3/8x5		0 5	A36	5	
1	p468	PL 1/4x1 1/2			A36	0	
11	sb9	SB1/2		2 11	A36	27	
			FIELD BOLTS				
8		1/2 Dia KNICK BOLT TZ 2		0 4	EMBED=3		

Total weight: 218

BILL OF MATERIAL						
LINE #	QTY	PIECEMARK	DESCRIPTION	LENGTH	REMARKS	WEIGHT
#	TOTAL					TOTAL
ONE			HANDRAIL			145
1	85HR1		HSS1 1/2x1 1/2x1/8	6 5/8	A500C	14
1	hss1043		HSS1 1/2x1 1/2x1/8	5 8/4	A500C	13
1	hss752		HSS1 1/2x1 1/2x1/8	3 9/8	A500C	8
1	hss621		HSS1 1/2x1 1/2x1/8	3 9/8	A500C	8
1	hss637		HSS1 1/2x1 1/2x1/8	3 8/2	A500C	8
1	hss1050		HSS1 1/2x1 1/2x1/8	2 11 3/4	A500C	7
1	hss1051		HSS1 1/2x1 1/2x1/8	2 8 1/16	A500C	6
1	hss1034		HSS1 1/2x1 1/2x1/8	0 6 1/8	A500C	1
1	hss744		HSS1 1/2x1 1/2x1/8	0 3 3/16	A500C	1
1	hss566		HSS1 1/2x1 1/2x1/8	0 2 7/8	A500C	1
1	hss569		HSS1 1/2x1 1/2x1/8	0 2 7/8	A500C	1
1	hss1049		PIPE 1 1/4 STD	10 9 13/16	A53	25
2	rb21		RB 5/8	0 4 15/16	A36	0
1	rb9		RB 3/8	0 4 13/16	A36	0
8	sb10		SB 1/2	2 9	A36	19
1	sb17		SB 1/2	2 8 3/8	A36	2
14	sb12		SB 1/2	2 8 5/16	A36	32

Total weight: 145





ONE STAIR 1513S

BILL OF MATERIAL						
SHIP MARK	PIECEMARK	QTY	DESCRIPTION	LENGTH	GRADE	REMARKS
1513S		ONE	STAIR			
	c822	1	C10x15.3	13 10 1/2	A572-50	Galv
	c230	1	C10x15.3	1 0 1/8	A572-50	
	a2403	1	L1 1/2 x 1 1/2 x 1/4	4 10 1/8	A572-50	
	a2402	1	L1 1/2 x 1 1/2 x 1/4	3 7 3/4	A572-50	
	a2189	2	L3 x 3 x 3/8	0 5 1/2	A572-50	
	a2105	1	L3 x 3 x 3/8	0 4	A572-50	
	p3491	2	PL 3/8 x 5	0 5 1/16	A572-50	
	p3450	1	PL 1/4 x 2 5/8	0 5 3/8	A572-50	
			FIELD BOLTS			
		1	3/8 Dia ADHESIVE ANCHOR	0 7		+1PL, 1HD WASH GALV
		4	3/8 Dia A325	0 2		+1HD, 1DTI WASH GALV

